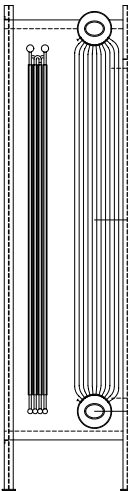
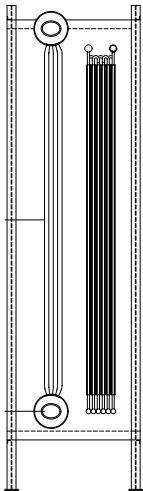
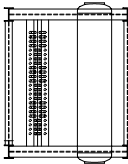
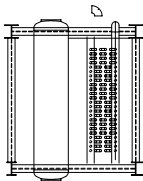


DO NOT SCALE - USE DIMENSIONS ONLY *MVA & INDICATES NOT FURNISHED BY ERI

DO NOT USE FOR CONSTRUCTION UNLESS APPROVED BELOW

THIS DRAWING IS THE PROPERTY OF ENERGY RECOVERY INT'L AND IS LOANED ON CONDITION THAT IT SHALL NOT BE COPIED OR REPRODUCED IN WHOLE OR IN PART OR BE LOANED TO ANY THIRD PARTY OR USED IN ANY WAY WITHOUT THE WRITTEN CONSENT OF ENERGY RECOVERY INT'L. ANY EQUIPMENT OR MATERIAL SHOWN BUT NOT FURNISHED BY ENERGY RECOVERY INT'L IS FOR ILLUSTRATING THE APPLICATION AND ENERGY RECOVERY INT'L ACCEPTS NO RESPONSIBILITY AS TO THE INSTALLATION OR OPERATION OF SUCH EQUIPMENT OR MATERIALS.

REV.	DATE	DESCRIPTION	OWN	CHK	APP



TYPICAL HEADER AND TUBING ARRANGEMENTS

PRELIMINARY LAYOUT ONLY.
ERI PROPOSAL No. 20223-H-1

ENERGY RECOVERY INTERNATIONAL 6940 COMMERCE HIGHWAY, LINCOLN, NEBRASKA 68502		
A Division of NATIONAL DYNAMICS, an equal-opportunity company		
GENERAL ARRANGEMENT SERIES: H.R.S.G.		
LINCOLN ELECTRIC SYSTEM		
SCALE: NONE	DATE: 02-26-2002	
DRAWN BY: KAJ	CHECKED:	APPROVED:
JOB NO.: PROPOSAL	SERIAL NO.:	
DTY:	DRAWING NO.:	E220223D