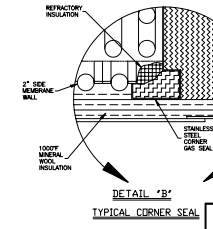
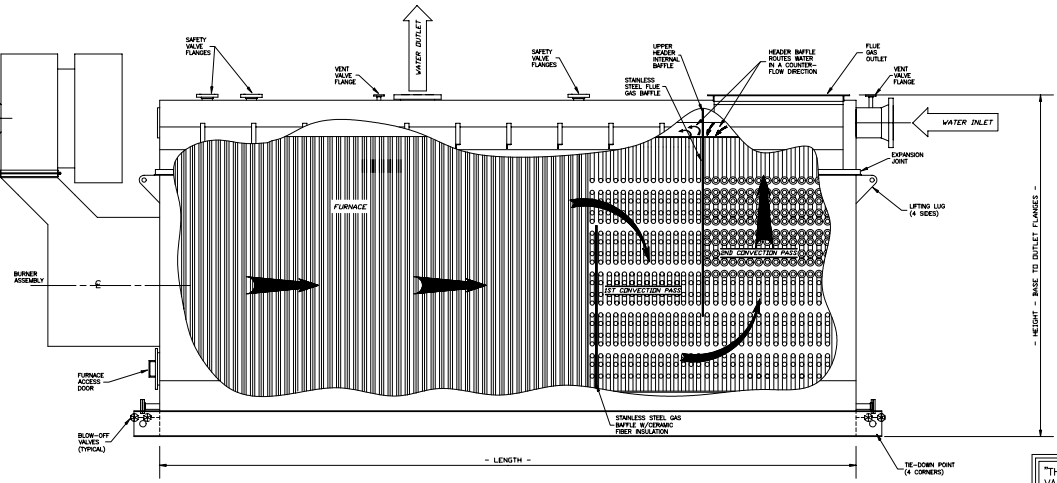
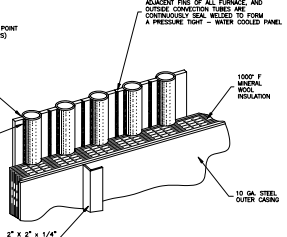
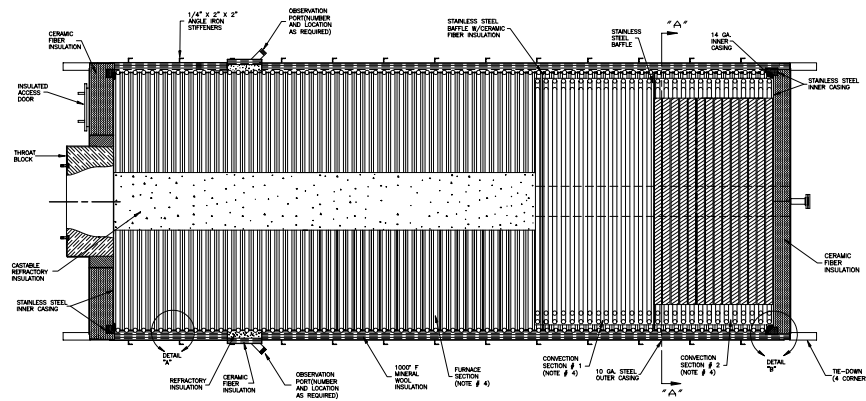
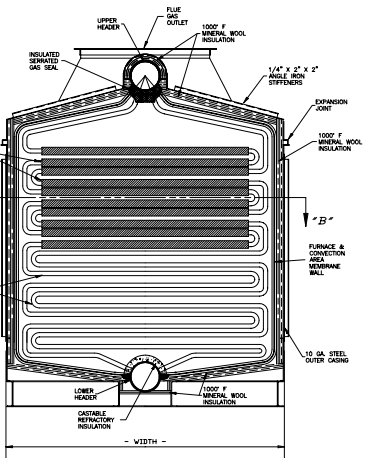


DO NOT SCALE - USE DIMENSIONS ONLY *MVA IS INDICATED NOT FURNISHED BY E.I.I.
 DO NOT USE FOR CONSTRUCTION UNLESS APPROVED BY E.I.I.
 THIS DRAWING IS THE PROPERTY OF ENERGY RECOVERY INT'L. AND IS LOANED ON CONDITION THAT IT SHALL NOT BE REPRODUCED OR COPIED IN WHOLE OR IN PART OR DISCLOSED TO ANY THIRD PARTY OR USED IN ANY WAY WITHOUT THE WRITTEN CONSENT OF ENERGY RECOVERY INT'L. ANY EQUIPMENT OR MATERIAL SHOWN BUT NOT FURNISHED BY ENERGY RECOVERY INT'L. IS FOR ILLUSTRATIVE PURPOSES ONLY. THE INSTALLATION OR OPERATION OF SUCH EQUIPMENT OR MATERIALS IS THE RESPONSIBILITY OF THE USER.

REV.	DATE	DESCRIPTION	OWN	CHK	APP

NOTES

1. BOILER CONSTRUCTION IS PER THE LATEST EDITION OF THE A.S.M.E. BOILER CODE, SECTION 1.
2. CASING IS SEAL WELDED FOR PRESSURE TIGHT CONSTRUCTION.
3. CASING EXPANSION JOINTS PROVIDED TO ALLOW STRESS FREE EXPANSION OF UNIT PRESSURE PARTS.
4. NUMBER OF TUBES IN FURNACE AREA AND IN EACH ROW OF CONNECTION SECTION ARE FOR ILLUSTRATING PURPOSES ONLY AND WILL CHANGE WITH REQUIREMENTS OF FURNACE TEMPERATURE AND FLUID INLET AND OUTLET TEMPERATURES.



THIS DRAWING IS A REPRESENTATION OF VARIOUS MODELS OF THE NEBRASKA BOILER "MAX-FLOW" MODEL HOT WATER GENERATOR. NUMBERS AND SPACINGS OF TUBES, AND BURNER OPENINGS WILL VARY. THIS DRAWING IS A PICTORIAL VIEW FOR CUSTOMER CONVENIENCE AND INFORMATION. SOME RECENT MANUFACTURING ADVANCES MAY NOT BE SHOWN.

ENERGY RECOVERY INTERNATIONAL
 6940 CONSUMER ROAD
 LINCOLN, NEBRASKA 68507
 A Division of NATIONAL TRIMMEL, an open-chain company

GENERAL ARRANGEMENT SERIES:
 MAX-FLOW MODEL - X
 X - MM BTU HOT WATER GENERATOR

-CHANGE TEXT/ADD NOTES-

SCALE: NONE	DATE: 08-20-2008
DRAWN BY: KAJB	CHECKED: APPROVED:
LOG NO.: SALES PROPOSAL	ESTIM. NO.:
CITY:	DRAWING NO.:

EHTHW/NEW